



Congratulations on the purchase of your new BrakeAway Motorcycle Cruise Control. At BrakeAway Products, we are committed to your complete satisfaction. With proper installation, use, and periodic maintenance, this cruise control is built for the long haul in more ways than one. Please follow all of the instructions carefully to insure your riding safety and enjoyment.

**PROPER USE, AFTER INSTALLATION.** (The following information is to be shared with any person who will be riding or buying any Motorcycle equipped with a BrakeAway Cruise Control).

Always include your cruise control in your standard pre-ride inspection. Make sure the unit engages easily, throttle should turn with little effort but remain in position on it's own. The unit should effortlessly snap to the disengaged position with a slight pull of the brake lever or tap of the Manual Release Lever. The throttle should always turn freely when unit is disengaged. Check the Cam(8) (see diagram on next page) for wear at the point of contact with the brake lever or damage of any kind. All fasteners must be tight.

**Warning! Never use this product with worn or damaged parts.** All replacement parts are obtainable by contacting BrakeAway Products Inc at (503)372-9346 or e-mail [customersevice@brakeawayproducts.com](mailto:customersevice@brakeawayproducts.com).

Once you're on the open road and ready to cruise, reach the speed you want to maintain and let your R.P.M.s level off. While holding the throttle still, reach with your right thumb only and push the engage button(20) until it snaps. Your bike should now maintain your set speed on it's own. You can make adjustments for up or downhill grades with a slight twist of the throttle while engaged.

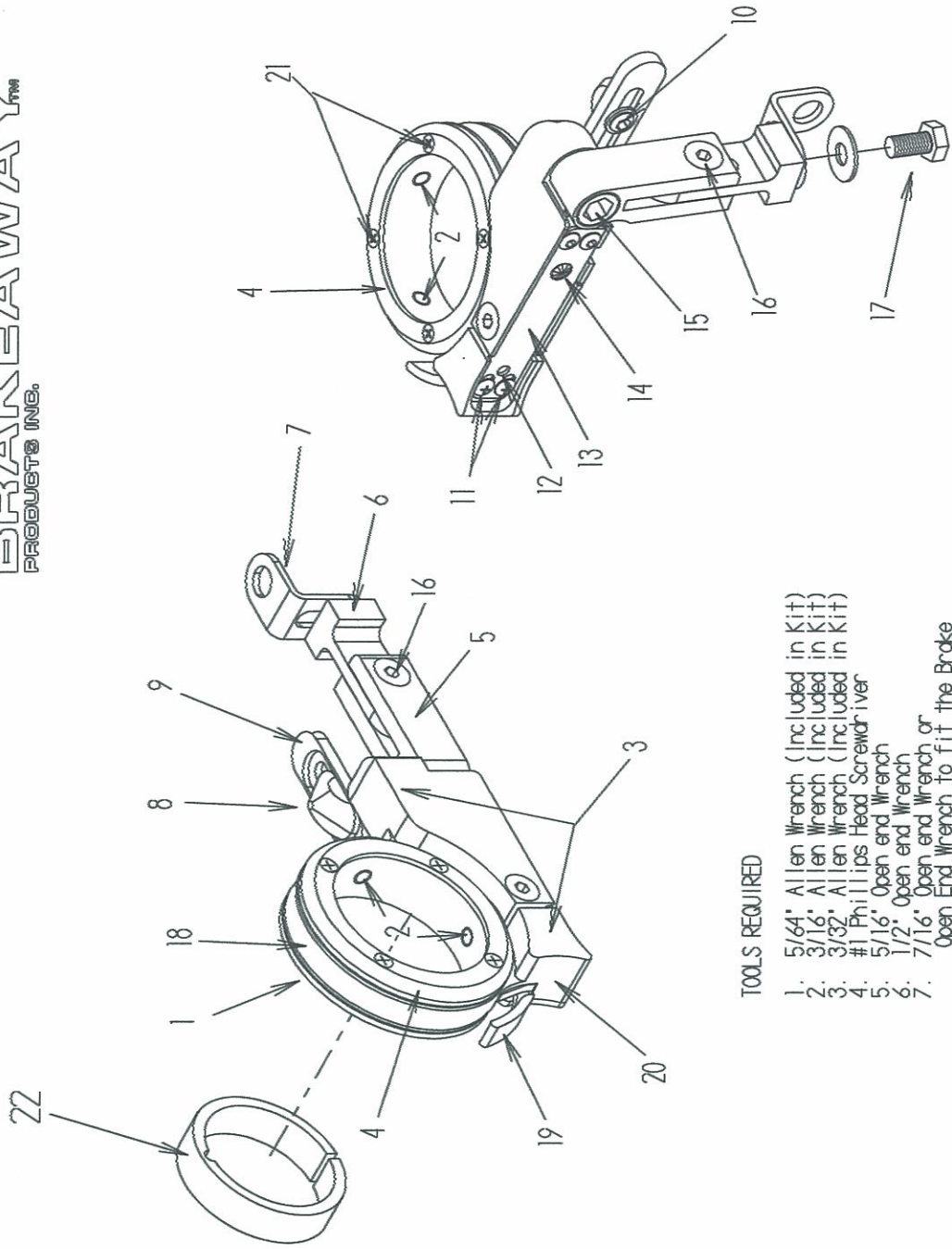
To disengage the unit simply pull the front brake or push forward on the manual release lever(19) with your right thumb until the unit snaps to the disengaged position. Always keep your cruise control clean and free of debris, occasionally lubricate the catch pin(14) with a light grease or chain wax.

Never forget that you maintain control even when unit is engaged. Always be aware of your cruising speed and maintain safe distance from objects or vehicles in front of you. Never let go of your throttle. The BrakeAway cruise control is not intended for hands free or one handed riding, this unit was specifically designed to allow the rider to safely rest a cramping throttle hand on the throttle.

BrakeAway Products wishes you many years of cramp free cruising, ENJOY!!!

# DIAGRAM

1. Slip Ring
2. Set Screws (8-32 X 1/8" SS Set Screw)
3. Clamp Ring Cover
4. Slip Ring
5. Swivel
6. End Bracket
7. Cam
8. Cam Support
9. Cam Screw (8-32 X 1/4" SS Button Head & Lock Washer)
10. Clamp Tension-Adjustment Screws (4-40 X 1/4" SS Pan Head)
11. Tension-Adjustment Hole
12. Spring Plate
13. Catch Pin
14. Swivel Lock Screw (1/4-20 X 1/2" SS socket head cap screw)
15. Slide Lock Screw (8-32 X 1/2" SS Flathead Socket)
16. End Bracket - Lock Screw (10-32 X 3/8" SS Hex Head)
17. Clamp Ring
18. Manual Release Lever
19. Engage Button
20. Cover Screws (2-56 X 1/4" SS Flathead)
21. Adaptor Ring (Stock Grip Only. Specific to Bike Model)



## TOOLS REQUIRED

1. 5/64" Allen Wrench (Included in Kit)
2. 3/16" Allen Wrench (Included in Kit)
3. 3/32" Allen Wrench (Included in Kit)
4. #1 Phillips Head Screwdriver
5. 5/16" Open end Wrench
6. 1/2" Open end Wrench
7. 7/16" Open end Wrench or Open End Wrench to fit the Brake Pivot nut of your Motorcycle